



Unit 626 Kilshane Avenue, North West Business Park, Ballycoolin, Dublin 15, Ireland
 Telephone: +353 1 8612 632, Fax: +353 1 8612 647, email: sales@driveriteltd.com
 www.driveriteltd.com

W21-760-3003

Suitable for – Fiat Ducato, Citroen Jumper / C25, Peugeot Boxer / J5, Talbot Express.

INSTALLATION INSTRUCTIONS

All work should be carried out in a properly equipped workshop with due regard to Health and Safety Regulations. No further reference to Health and Safety Regulations will be made, but they must be considered at all times.

The kit should be opened and the contents checked against the parts list provided.

Identify the various components and familiarise yourself with them using drawings and information provided.

WARNING

Do not inflate this assembly when it is unrestricted. When installed, a minimum of 10 psi should be maintained in the air bellows at all times to avoid damage. Do not inflate beyond 100 psi.

IMPORTANT

This kit is not designed to increase the GVW of your vehicle. For your safety and to prevent possible damage to your vehicle, do not exceed the maximum load recommended by the vehicle manufacturer.

PARTS LIST

DESCRIPTION	PART NO.	QTY
1M1A AIR BAG	W02 358 3000	1
MOUNTING BRACKET	21 3582 3924	1
PLUNGER	21 3582 3925	1
SPACER	21 3582 3926	1
5/8" - 11 UNC HEX NUT	21 3582 3829	1
1/8" NPTF ELBOW FITTING	21 3582 3055	1
1/4" TEE PIECE	21 3582 3025	1
1/4" AIR LINE (1 M)	21 3582 3912	1
INSTRUCTIONS	21 3582 3905	1

STEP 1 MOUNT THE AIR BAG

Mount the small air bag onto the Load Sensing Valve bracket using the 5/8" nut provided. Then insert the elbow air fitting into the bottom of the bag using thread tape and screw the spacer into the top plate.

STEP 2 PREPARE THE LOAD SENSING VALVE

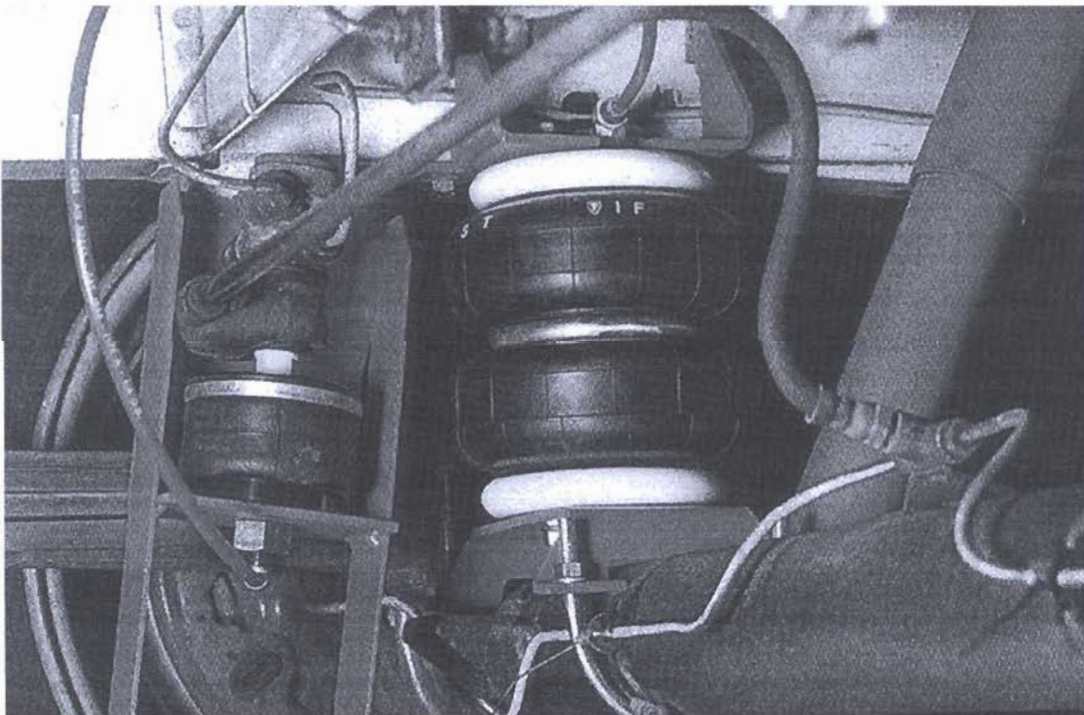
Remove the rubber boot from the bottom of the Load Sensing Valve. Make an 8 mm hole in this rubber cover. This allows the plunger to sit right up against the valve with its threads protruding out of the rubber cover when replaced.

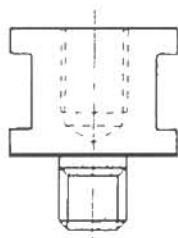
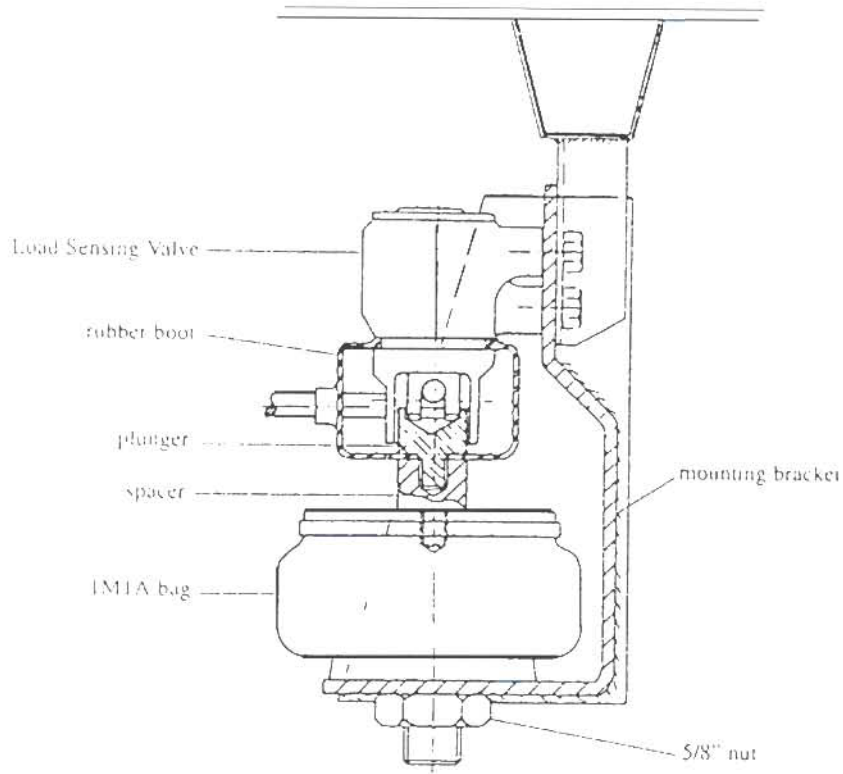
STEP 3 INSTALL THE ASSEMBLY

Loosen the Load Sensing Valve from the chassis frame. Then thread the plunger into the spacer through the hole made in the rubber boot, as shown in diagram. Insert the bracket between the Load Sensing Valve and the chassis frame using the two location holes. The plunger now acts against the bottom of the valve.

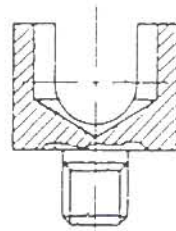
STEP 4 INSTALL THE AIR LINE

Insert one end of an appropriate length of air line into the elbow fitting. Join the other end of the existing air line to the air springs using the tee piece provided.





SPACER



PLUNGER

